



# Greenfield Primary School

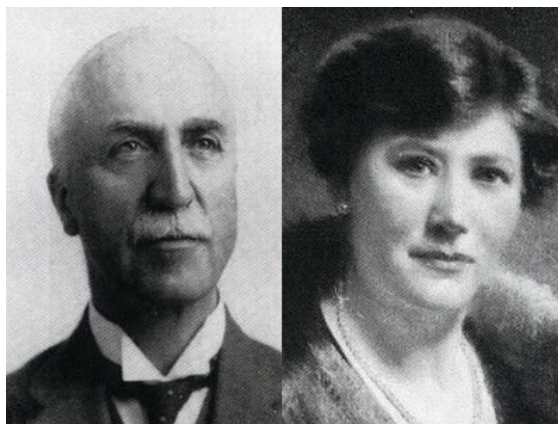
Autumn Term 2

History

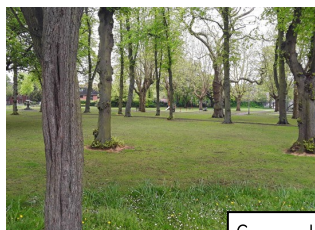
Year 1 and Year 2

KSI History Detectives

Local History: Our School and Local Area



Ernest Stevens (1867— 1957) gave several gifts to the local area, including Greenfield Gardens and Mary Stevens Park, which is named after his wife Mary (1869— 1925).



Greenfield Gardens.



Mary Stevens Bandstand.

I wonder how many children through time have run in the park and played on the bandstand?



The War Memorial and Mary Stevens Park Gates are Grade II listed.

Timeline— the order in which events happened:

Beyond living memory

Within living memory

1820

1920

2020

There was NO school on Hill Street

There was a school on Hill Street



Mary Stevens Park was officially opened

The Queen visited Mary Stevens Park



The new school was built